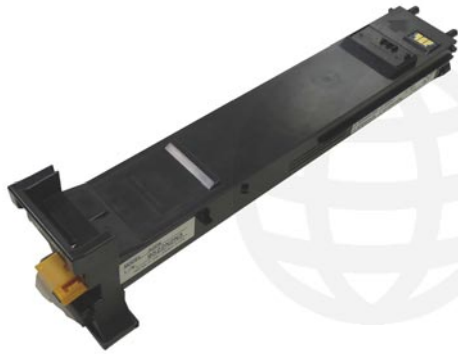


EASY TO REMANUFACTURE CARTIDGES FOR LATIN AMERICA



KONICA MINOLTA MAGICOLOR 4600



KYOCERA TK-112



OKIDATA C9600



PANASONIC KX-FA85



SAMSUNG CLP-350



XEROX PHASER 6250



XEROX PHASER 7700

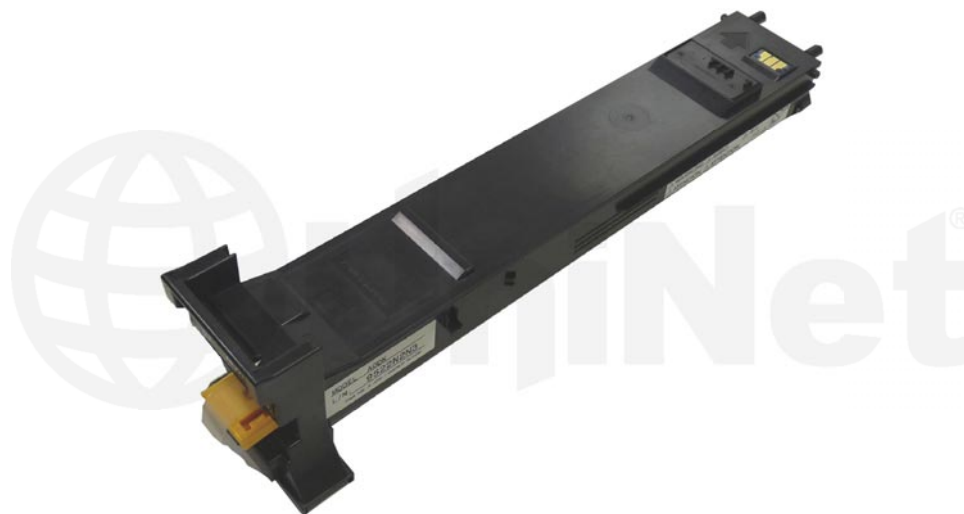


XEROX PHASER 7760

EASY TO REMANUFACTURE CARTRIDGES FOR LATIN AMERICA

By the Technical Staff at UniNet

This is a continuation in a series on easy to do color and monochrome cartridges. They represent some of the best profit opportunities currently in our industry. These cartridges are all very simple, and with a good majority of them there is nothing to test! Training is minimal and in all cases the time needed to do them is very small.



KONICA MINOLTA MAGICOLOR 4600 SERIES

The Konica Minolta Magicolor 4600 Series cartridges are rated for 8,000 pages. The OEM part numbers are A0DK132 Black, A0DK432 Cyan, A0DK332 Magenta, and A0DK232 Yellow.

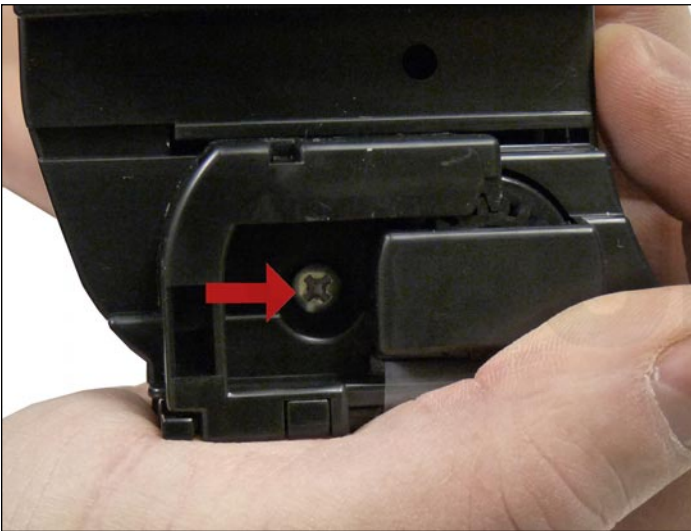
There is a chip that must be replaced every cycle.



1. Peel the label off the end cap.

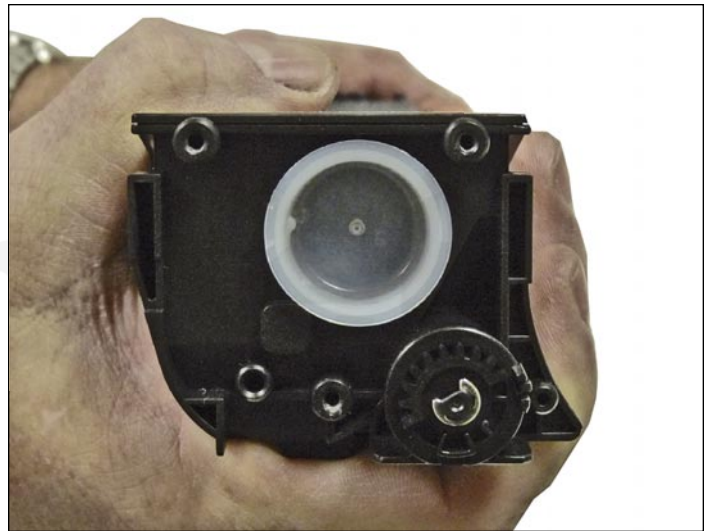


2. Remove the two screws.



3. Slide the port cover over and remove the third screw.

Remove the end cap.



4. Remove the fill plug and clean out any remaining toner.

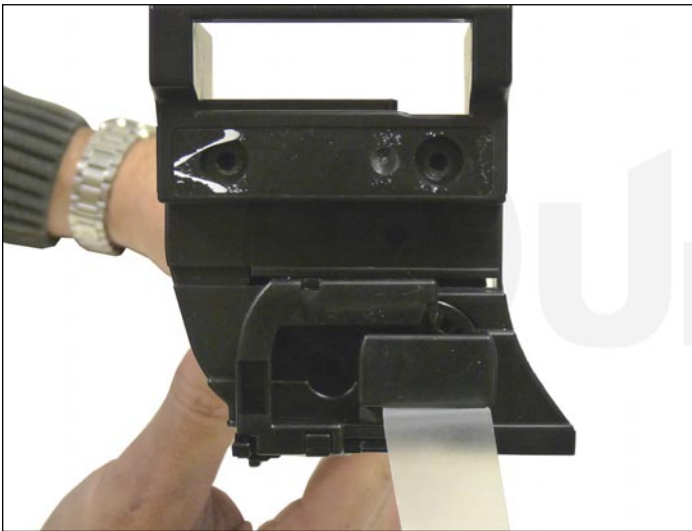
This fill plug is very soft. Be careful not to put a hole in it.



5. When a seal is available, install it now.



6. Turn the cartridge so the port opening is facing up and fill the cartridge with new dedicated color toner for use in Magicolor 4600. Replace the fill plug.



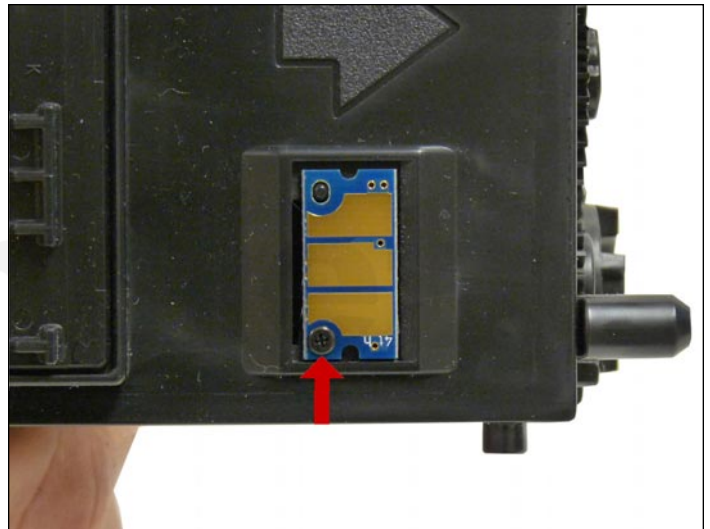
7. Install the end cap on the cartridge.

If a seal was installed, thread it through the slot.

Set the port drive gear as shown and make sure it meshes properly.

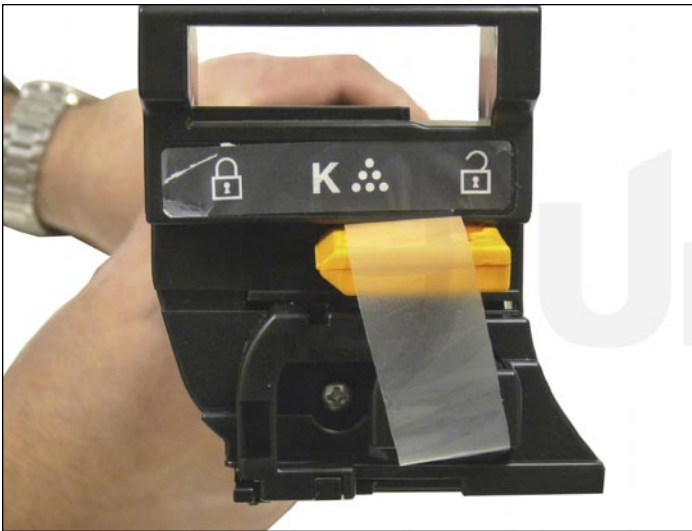


8. Install the three screws and install the label.



9. Remove the screw on the chip.

Replace the chip.



10. If a seal tab is available, install it on the seal and insert it into the cartridge as shown.



KYOCERA TK-112

The Kyocera TK-112 series toner cartridges are used in the FS-720, 820 and the 1016. They are rated for 6,000 pages at 5% coverage. There are also the TK-112E and TK-110 cartridges that are sold in Europe (3,000 and 6,000 pages respectively). There is no chip on the cartridge.



1. Remove the fill plug.

Clean out all the remaining toner.



2. Make sure the toner port is closed.

Fill with new toner for TK-112.



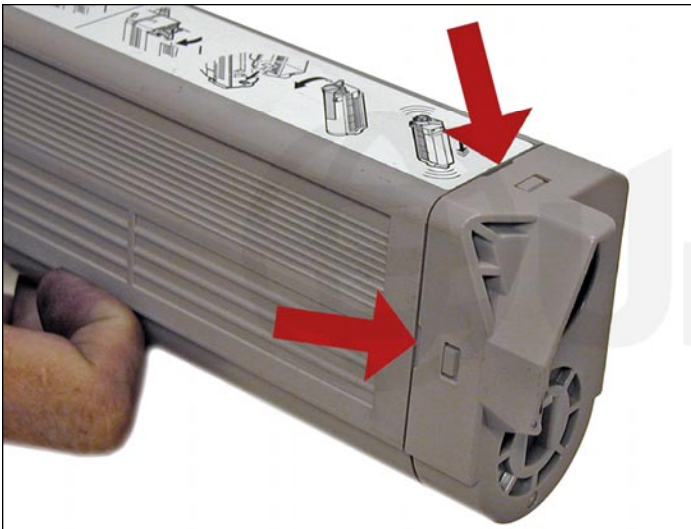
3. Re-install the fill plug.



OKIDATA C9600

The Okidata C9600 series toner cartridges are rated for 15,000 pages at 5% coverage. They are compatible with the C9600 and C9800 machines. The OEM part numbers are the 42918904 Black, 42918903 Cyan, 42918902 Magenta, and 42918901 Yellow.

There is a chip on the cartridge that must be replaced each cycle.



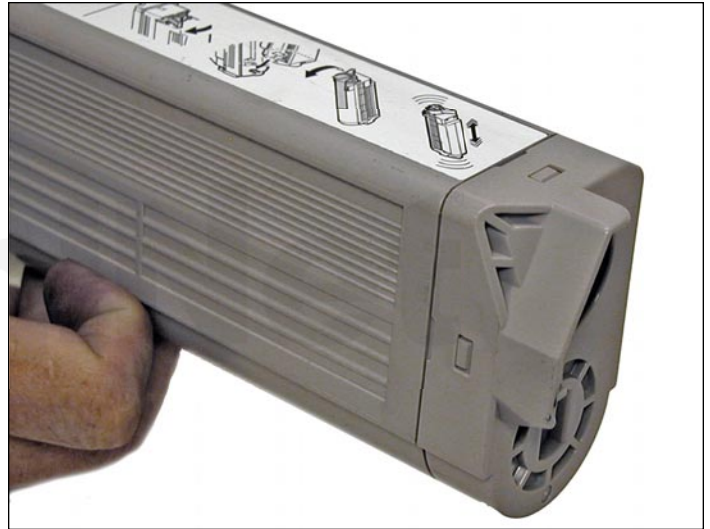
1. On the side opposite the blue handle, press in on the tabs of the end cap.

Remove the end cap.

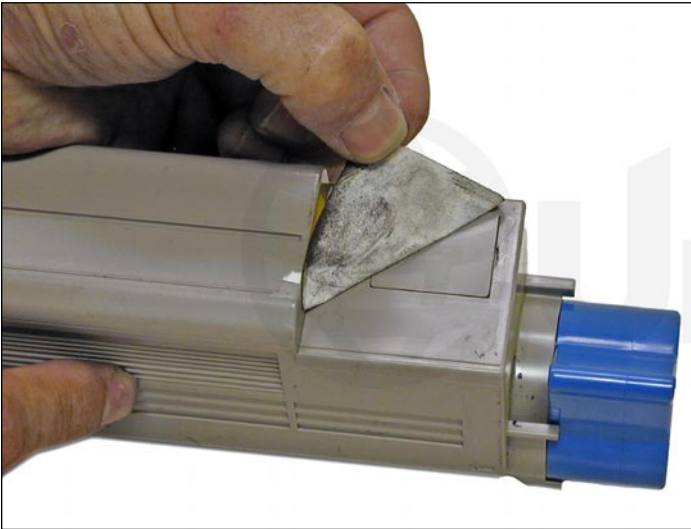
Remove all the old toner from the hopper.



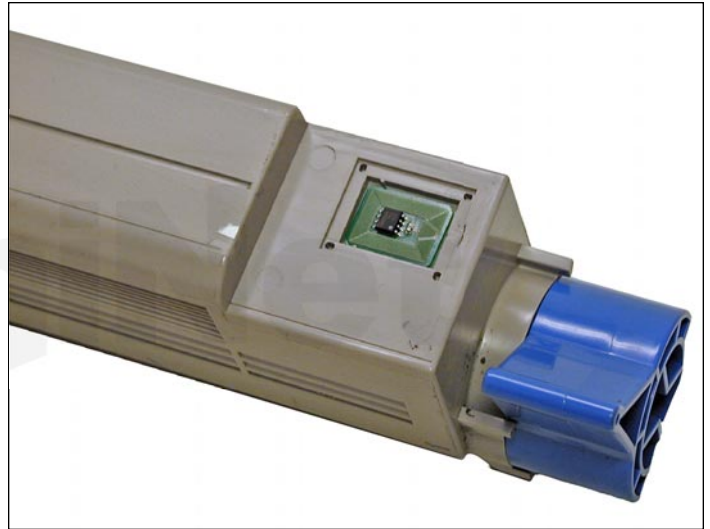
2. Fill with new toner for use in Okidata C9600.



3. Replace the end cap.

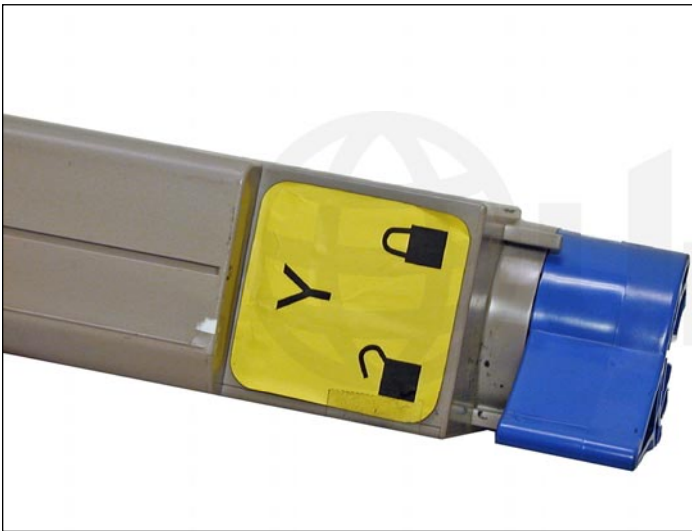


4. Peel up the colored label.



5. Remove the chip cover.

Replace the chip.



6. Replace the chip cover and label.



PANASONIC KX-FA85

The Panasonic KX-FA85 toner cartridge is used in the KX-FLB801, 811, and 851 machines.

It is rated for 5,000 pages at 5% coverage.

There is no chip on the cartridge.



1. Turn the side center part of the tube to open the toner port.



2. Clean out all the remaining toner.

Fill with new toner for use in KX-FA85.



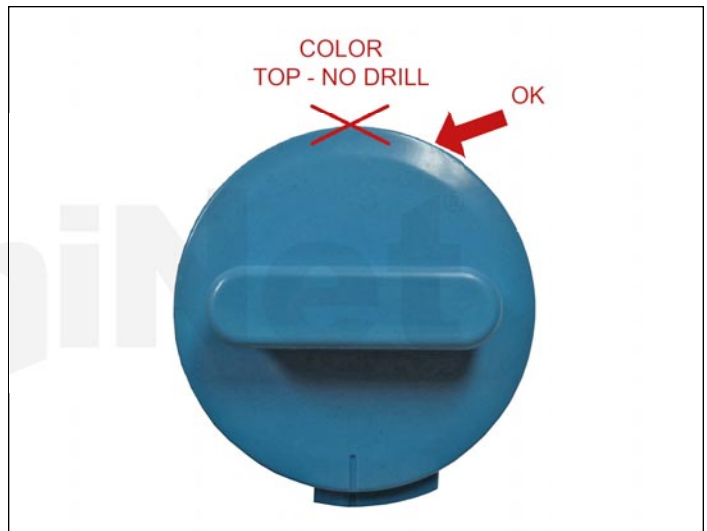
3. Close the toner port.



SAMSUNG CLP-350

The CLP-350 cartridges are rated for 4,000 pages Black and 2,000 pages Color. The OEM cartridge part numbers are: CLP-K350A Black, CLP-C350A Cyan, CLP-M350A Magenta, and CLP-Y350A Yellow.

There is a chip that has to be replaced each cycle, and the cartridge itself has to be modified slightly in order to refill it.



1. In order to clean and fill the cartridge, a hole must be drilled or melted into the cartridge. The hole cannot be placed at the top of the cartridge, as that will cause cartridge problems. The black cartridge (left photo) should have the hole placed on one of the flat sides. The color cartridges (right photo) should be between 1 and 3 o'clock position or in the top right quarter.



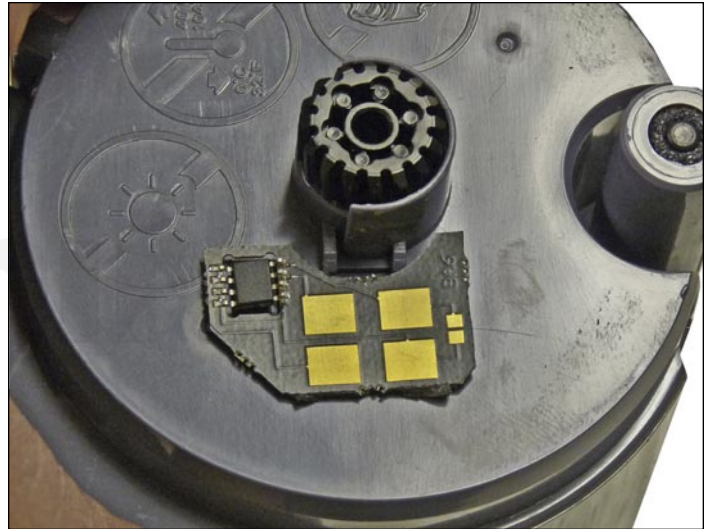
2. The hole can be drilled with a 1/2" drill bit or melted with a soldering iron. If it is drilled, great care must be taken to get all the shavings out. If it is melted, the outer edge of the hole has to be shaved flat with a razor blade. Clean out all the remaining toner/shavings thoroughly.



3. Insert a small funnel into the hole and fill with new toner for use in CLP-350.



4. Cover the hole using a small piece of tape. Make sure the seal is tight and that there are no leaks. Also make sure the tape/label does not extend to the top of the cartridge as it is installed. This area has a very tight fit and the seal may be torn off as the cartridge is installed.



5. The OEM chip is not removed. A new chip is placed over it.

Peel off the adhesive backing on the chip and place it over the OEM.



XEROX PHASER 6250

The Xerox Phaser 6250 series toner cartridges are rated for 8,000 or 4,000 pages at 5% coverage. The OEM part numbers are the 106R00675 Black (8K), 106R00671 Black (4K), 106R00672 Cyan (8K), 106R00668 Cyan (4K), 106R00673 Magenta (8K), 106R00669 Magenta (4K), 106R00674 Yellow (8K), and 106R00670 Yellow (4K).

The low yield cartridges can be made into high yield by using the correct load of toner/developer and the correct chip. There is a chip on the cartridge that must be replaced each cycle.

These cartridges have developer mixed with the toner. New replacement toner must have the developer mixed in before installing in the cartridge.



1. Carefully pry off the colored end cap by lifting up on the plastic around the tabs.

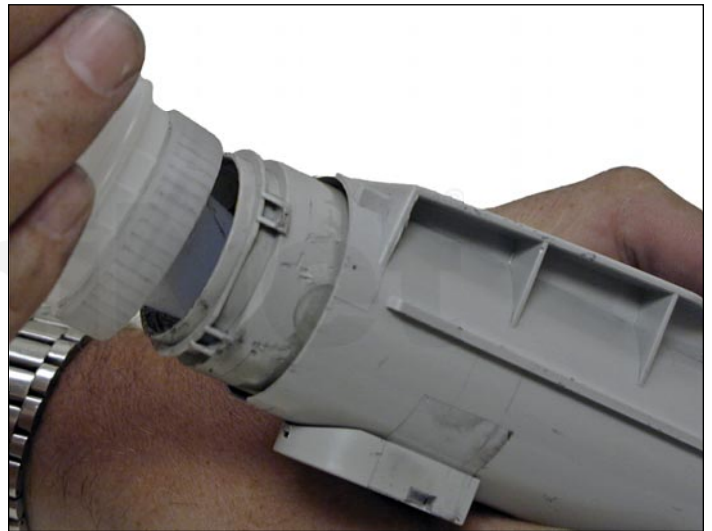


2. Remove the end cap.



3. Carefully pry out the fill plug. Be very careful doing this.

The plug is very soft, and easily damaged!

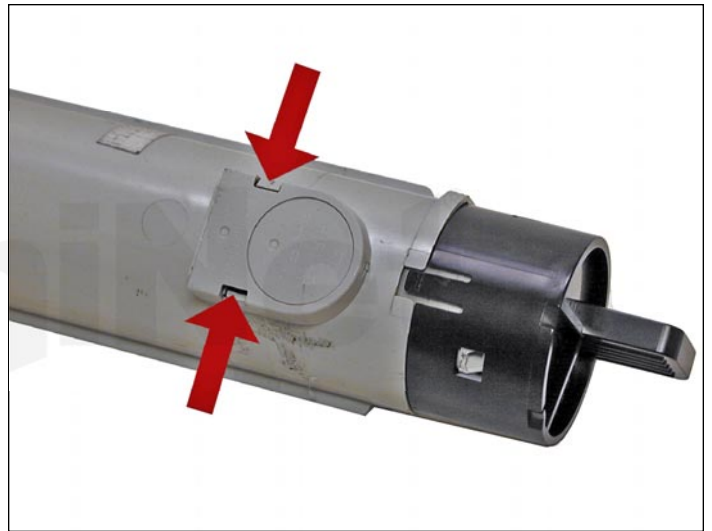


4. Remove all the old toner and clean cartridge thoroughly.

Fill with new toner for use in Phaser 6250.



5. Replace the fill plug and end cap.



6. Press in on the tabs of the chip holder.

Remove it from the cartridge.



7. Separate the chip from the holder.

Replace the chip.



8. Snap the chip holder back on the cartridge.



XEROX PHASER 7700

The Xerox Phaser 7700 toner cartridges are rated for 5,000/12,000 pages black and 4,000/10,000 pages color. The OEM part numbers are 016-1882-00 Black (5K), 016-1947-00 Black (12K), 016-1879-00 Cyan (4K), 016-1944-00 Cyan (10K), 016-1880-00 Magenta (4K), 016-1945-00 Magenta (10K), 016-1881-00 Yellow (4K), and 016-1946-00 Yellow (10K).

Use two bottles for the high yield cartridges.

There are no chips used in this cartridge.



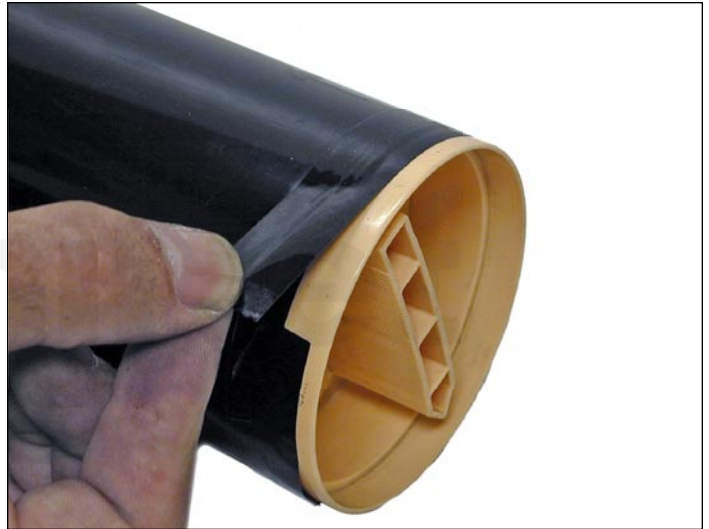
1. Remove the tape from the colored end cap.



2. Remove the end cap.



3. Vacuum the tube clean, and fill with new toner.



4. Replace the end cap.

Replace the tape.



XEROX PHASER 7760

The Phaser 7760 cartridges are rated for 32,000 pages Black and 25,000 Color. The OEM numbers are 106R01163 Black, 106R01160 Cyan, 106R01161 Magenta, and 106R01162 Yellow.

There is a chip that must be replaced every cycle.



1. Remove the tape from the colored end cap.



2. Remove the end cap.

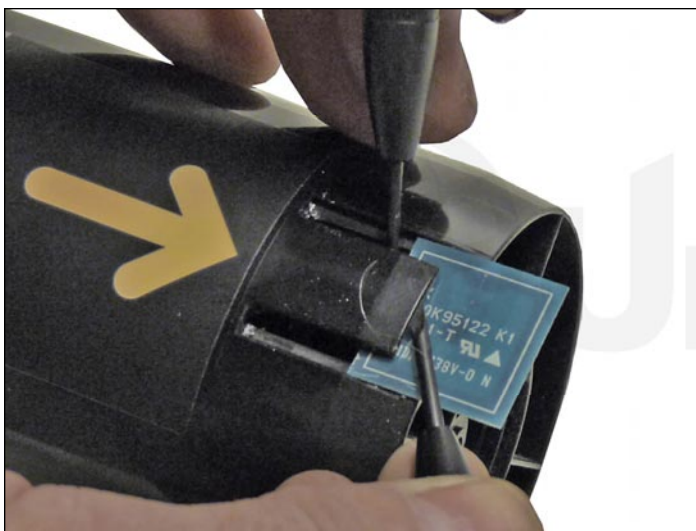


3. Vacuum the tube clean and fill with new toner for use in Phaser 7760.



4. Replace the end cap.

Replace the tape.



5. Replace the chip by prying up the center tab while using a small screwdriver to move the chip out.

Install the new chip component side down.

Make sure the two edge tabs lock the chip in place.

